



FRIENDS & OF KETTERING ART GALLERY MUSEUM

ANNUAL REPORTS 2015 – 2016



FRIENDS OF KETTERING ART GALLERY AND MUSEUM

ANNUAL GENERAL MEETING

Wednesday 20 April 2016 7.15 p.m. in the Alfred East Art Gallery

(Chaired by Mr. Richard Makins)

AGENDA

1. Attendance and apologies
2. Minutes of AGM held on 30 April 2015 (circulated)
3. Matters arising
4. Reports (oral): Chair; Acting Treasurer (accounts for 2015/16 will be available);
Secretary

Written reports are in the Friends KAGAM Annual Report 2015/16.
5. Election of officers and committee –
 - **Officers**
The President (Philip Hollobone), Chairman (John Wilson) and Secretary (Barbara Lewis) are all willing to stand for re-election.

The Treasurer, David Watson, does not seek re-election. Phillip Steele has been acting in the post and is nominated for election as Treasurer.
 - **6 committee members**
Elected members Stephanie Mercer, Ian Luck, Nicola Robinson, David Brown and Maurice Bayes are all willing to stand for re-election.

There is one vacancy for the committee and nominations are invited.
6. Amendments to the Constitution.

The committee will propose a number of technical amendments to the Constitution. They are shown in red on the copies of the Constitution that have been sent to members.
7. Future events and activities
8. Any other business

The AGM will be followed at 8.0 pm by an illustrated talk by John and Phylis Wilson on their recent visit to central Vietnam and the 3 World heritage Sites in the Danang region. It is free to members but will cost £3 for non-members.

CHAIRMAN and COMMITTEE REPORTS FOR 2015/16

The Chair of the Friends Committee, John Wilson welcomes members to the AGM and introduces our package of reports and accounts for the year April 2015 to the end of March 2016.

Thanks to acting President, Richard Makins for chairing the Annual General Meeting.

The Friends appreciate the continued support of our President, Philip Hollobone, and of Council nominees Keli Watts and Jan Smith.

The objectives of the Friends are - to further the work of the Kettering Art Gallery and Museum and make them more widely known; to help strengthen the collections of the Art Gallery and Museum by gift and purchase; to promote cultural and artistic activities;

The Committee will propose adding

- to organise talks and meetings for the furtherance of these objects.

This is what we have done for many years and having it clearly stated should enhance our eligibility for Gift Aid

Relationship with KBC and Museum/Gallery

Maurice Bayes for some years one of our councillor/members has now joined as an

elected member of the committee. We have two new council nominees – Keli Watts and Jan Smith. And we have continued to work well with Cultural and Leisure Services Manager, Emma Buckler – her Henry Gotch Schools exhibition is now on.

We were sad to see our highly respected Museum Officer, Ellie Baumber leave (to Welwyn & Hatfield) during the year but are very pleased to welcome Louise Hannam to the post.

Since last AGM, Friends helped with children's activities in the summer including a Tudor Halloween and we have helped with the funding of a WWI box for schools.

The Friends exhibited in the *Community Corner* in the Museum in January and we help distribute 'Highlights'. In addition to our own website, the Friends maintain the Museum and Gallery Facebook page. The Council provides us with rooms for committee meetings and for talks (and AGMs) – thanks to Emma, Hilary and Katie for assisting us.

We would like to wish Katie well for her marriage in July

David Brown has been organising talks this year and reports:

These last twelve months have been overflowing with varied and interesting presentations.

In the months before the summer break, we heard from Ian Addis giving a fascinating account of the History of the Parks and Playgrounds of Kettering. Next, David Boswell told us about Robert Kitson, Patron of the Arts and an acquaintance of Alfred East.

The new academic year started with a delightful presentation by Sian Brown. Sian was the designer and artist of the team who produced the Heritage Map of Kettering, which

is now prominently displayed at various locations in the town. She gave us an insight into the trials and tribulations of this kind of project. Sandra de Laszlo spoke in October about her world famous grandfather Philip de Laszlo who painted the portraits of almost everyone who was someone in the late 19th century!

An exceptionally well-attended talk in November by Steve Sharpe presented a highly knowledgeable account of the history of archaeology in the area. Roy Hargrave visited us again in January with a talk about Alfred East's sponsored travels in Japan and the works that this exciting change of environment produced.

(..... continues on page 8)

FRIENDS OF KETTERING ART GALLERY AND MUSEUM Charity No. 216048

INCOME AND EXPENDITURE ACCOUNT FOR THE YEAR ENDED 31 MARCH 2016

		2016			2015			
		General Fund	Restricted Fund*	Total		General Fund	Restricted Fund*	Total
Income								
Subscriptions		1,750	0	1,750		765	0	765
Gift Aid		145	0	145		0	0	0
Visitors Fees		360	0	360		183	0	183
Interest		8	0	8		1	5	6
Donations/Payments'		1,579	2,501	4,080		0	9,264	9,264
Refreshments		45	0	45		0	0	0
		3,887	2,501	6,388		949	9,269	10,218
*see analysis of Restricted Funds below								
' includes receipts for Prize Draw etc.								
Expenditure								
Lecture Fees		201	0	201		199	0	199
Heritage Map		1,211	0	1,211		0	0	0
NOST		570	0	570		0	0	0
Prizes/Fundraising		428	0	428		0	0	0
Gallery Signage		0	0	0		269	500	769
Excursions°		348	0	348		0	0	0
Gallery/Conservation		0	3,288	3,288		0	0	0
Museum/Young Friends		341	700	1,041		206	350	556
Secretarial^		343	0	343		330	684	1,014
Acquisition"		0	400	400		0	0	0
BafM sub/ins.		221	0	221		223	0	223
		3,663	4,388	8,051		1,227	1,534	2,761
Excess of Income over Expenditure		224	(1,887)	(1,663)		(278)	7,735	7,457
°Stow trip (fully covered by receipts from participants)								
^ incl. AGM printing costs (ex General Fund)								
"G Holland picture (ex Restricted Funds: Cadbury)								
BALANCE SHEET AS AT MARCH 2016								
Reserves as at 1/4/15		1,623	14,819	16,442		1,901	7,084	8,985
Surplus/(Deficit) for year		224	(1,887)	(1,663)		(278)	7,735	7,457
Reserves as at 31/3/16		1,847	12,932	14,779		1,623	14,819	16,442
Represented by								
Payments in advance								110
Debtors								
Petty Cash								9
Barclays Bank current				508				360
Barclays Bank bonus				14,271				15963
				14,779				16,442

*Restricted Funds comprise:						
		Balance at 1/4/15	Donations	Interest	Utilised	Balance at 21/3/16
2016	Gallery Fund	8,527	1,465		(2,965)	7,027
	Johnson Legacy	3,002	0		0	3,002
	Cadbury Donation	2,267	0		(400)	1,867
	Centenary Dinner	1,023	0		(1,023)	0
	Jowett Conservation		1,036		0	1,036
	Total	14,819	2,501		(4,388)	12,932
2015	Gallery Fund	3,111	6,264	2	(850)	8,527
	Johnson Legacy	0	3,000	2		3,002
	Cadbury Donation	2,950	0	1	(684)	2,267
	Centenary Dinner	1,023	0			1,023
	Total	7,084	9,264	5	(1,534)	14,819
Gallery Fund Donations						
WWI box project			700			
CC Community Fund Grant			765			
			1465			

*Note: this version of the accounts has been modified since being presented at the 2016 Annual General Meeting to correct a typographical error and, for added clarity, we have taken the opportunity to move the funds raised for the Jowett conservation project into a restricted fund. The total balance remains as declared and accepted at the meeting.

FRIENDS OF KETTERING ART GALLERY AND MUSEUM Charity No: 216048

Trustee Report for the year ended 31st March 2016

This year has seen considerable activity by the Friends in support of the Art Gallery and Museum, organising talks, sponsoring children's activities, sponsoring exhibition prizes, manning stands and volunteering, assisting new acquisitions and seeking grants and raising funds to facilitate these endeavours. Despite a busy year, the Friends continue to hold considerable funds and it will be an important mission going forward to ensure the maximum utilisation of the resources we have available.

The Trustees are elected from amongst the Members taking account of the various skills that are required to run the Charity. They are annually elected and ensure that the accounts are drawn up on an accruals basis consistent with the previous year and accepted accounting standards.

The Trustees have also considered the risks attaching to the Charity and believe that sufficient procedures are in place to mitigate those risks. However the future of the organisation can only be assured by the recruitment of new members and we are eager to welcome new volunteers. The Trustees are also able to confirm that the Charity complies with s4 Charities Act 2006 regarding providing a public benefit.

The Friends of Kettering Art Gallery and Museum's 2015-2016 year in pictures



Our year featured a Friends excursion to one of Alfred East's favoured landscape locations at Upper Swell in the Cotswolds ...



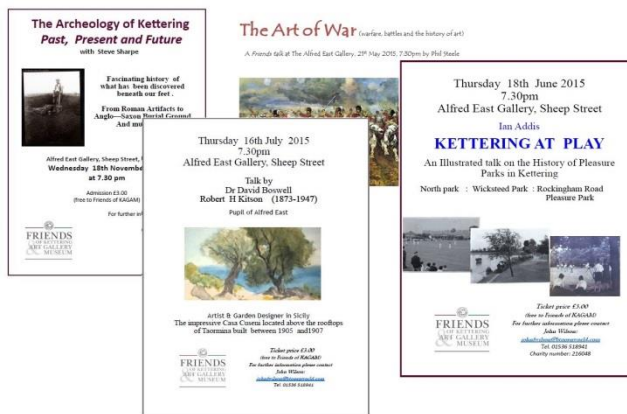
... courtesy of our friends at Stow Civic Society



Phil with the Heritage Map at Kettering Station



(The Museum and Gallery team pose with their awards after the 2015 NMHH annual presentations)



Regular talks moved to Wednesdays

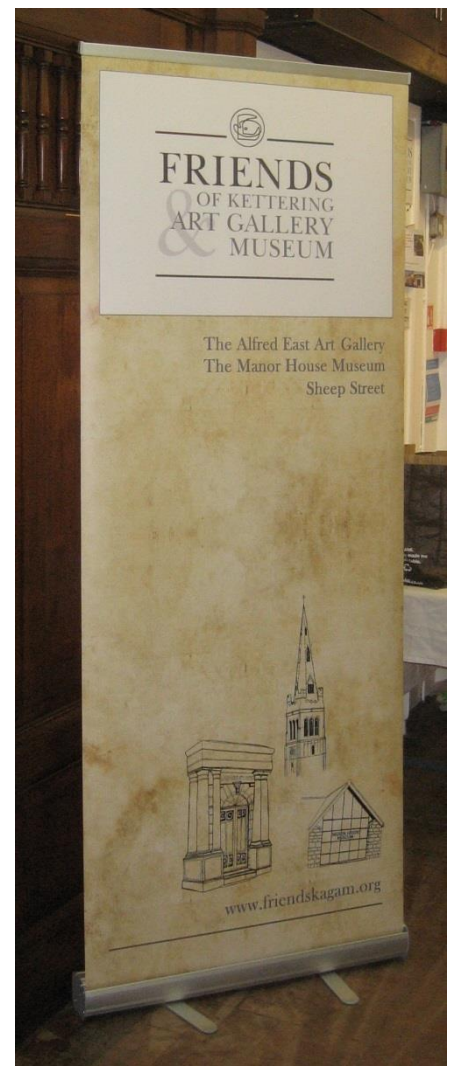


A year in which we said fairwell to Museum Officer Eleanor Baumber

In which we enjoyed some exciting Summer activities



The Big Paint and the Little draw at NOST



A new banner for the Friends and a day out with KDAS at the 370th anniversary event at Naseby battlefield.

(David Brown continues ...)

In February, John Cartwright's masterful summary of the activity of the Romans in the East was again well received, with some novel theories of the origins and purpose of Carr Dyke in its relation to the iron age tribes of East Anglia.

Finally, in March, we were delighted to welcome John Berkeley with his strange tale of the Flying Flea: Kettering's bid to become the aerospace capital of the East Midlands!

The program for the coming year is already taking shape, and we are sure to interest and amuse you with more unmissable presentations!

Membership Report (Barbara Lewis):

Subscriptions have increased this year as the number of joint members and youth members have increased significantly and we have received an injection of funds from the new 4 life members. Family membership has declined as children are no longer of an age to attend the workshops.

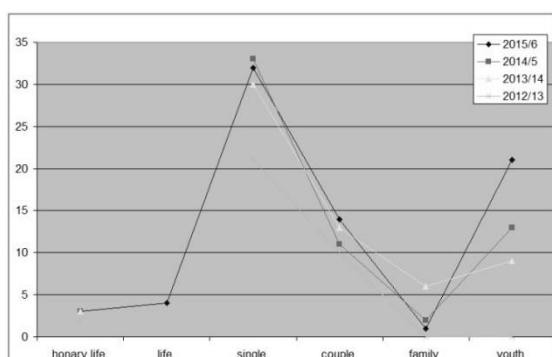
Young Friends attending free sessions at the museum have reduced to 125 compared to 150 last year. However only 450 places were taken in total out of over 900 available throughout the year.



The 9 monthly talks this year have attracted twice as many visitors although the average number of full members attending remains approximately the same as last year at 20 per talk.

Membership statistics

	2015/6	2014/5	2013/14	2012/13	New
honorary life	3	3	3	2	
life	4				4
single	32	33	30	21	10
couple	14	11	13	10	4
family	1	2	6	0	
youth	21	13	9	0	14
total units	75	62	61	33	
children	23	19	18	not known	
adults	65				



The committee and members were out in force at Naseby helped by the Civic Society and KDAS, advertising the Friends and encouraging people to have a go at the treasure hunt and lucky dip.

We also helped at the gallery and museum stall, when the cycle race came to Kettering,

distributing Highlights and information throughout the town and enjoying endless Soreen cake bars! The number of people in town was amazing and the atmosphere quite exhilarating and exciting.

Many members helped at NOST, manning the Friends stall and the 'little draw' for children, selling prize draw tickets and maps and again running the treasure hunt, won by Mrs Boyce ... and the lucky dip. The day was very successful and fun but hard work. Lots of interest was shown in our activities as the sunshine brought about 1200 people to the event. The results were over £1000 for the Frank Jowett conservation fund and monies for our children's activities.

New membership form inserts were printed for NOST and given to participants in the Big Paint and Little Draw....

Halloween was popular as ever and committee members helped with face painting and our lucky dip, which continues to be very popular.

The Kettering Grammar School Foundation gave a grant toward the museum children's activities, and to fund a schools' World War I

box and we obtained funding from the County Council Community Awards for the Little Draw. Sainsburys also donated monies for the NOST T-shirts and our members and local businesses gave very generously to support the Prize Draw.

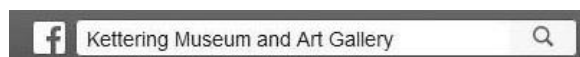
Support for Exhibitions, and the Collections ...

Over the last year the Friends have provided judges and prizes for Youth Open 2015 and for Youth Open 2016 and have supported both Open exhibitions: please take the time to vote for your favourite in the Open 16 next door.

Friends are invited to all previews and events and representatives are able to attend most openings of exhibitions in the Art Gallery and Museum – we are looking forward to Henry Gotch Schools – 19 March to 11 June, Kettering music and Kettering science ... Corby Photographic, KDAS and Northampton Town & District again

We are pleased to welcome back 'Midsummer Meadows' conserved with funds from the Friends and the memorable fundraising at the 2013 Centenary Dinner. 'Lake Bourget' is next to benefit from similar support: Ian Luck has more on the Gallery's conservation projects below. The Friends are currently arranging to assist with a case for the display of the Dingley Ring and we expect to be able to announce more news from the Museum shortly.

Website and Social Media Officer Phil Steele updates



Many thanks to everyone who regularly looks at our popular Kettering Museum and Art Gallery page on Facebook. As I submit my report we are over 90% of the way to a landmark '500 likes', and our posts regularly reach an audience of over 2,000. This has been a great success and we urge you to visit, *like* the page, enjoy the pictures and join in the chat.

Please also google our news page 'Kettering Art News' and visit the Friends website. There should be a lot of new material coming up very soon and we are currently looking at introducing online payments and donations. With your support, we can strengthen the Gallery and Museum's message. Please share our stories with your friends and invite them to like our page.

Conservation Projects 2015-2016 (Ian Luck)

Through 2015/16 two conservation projects were completed for the Gallery with funding help through the Friends.

First, Sir Alfred East's oil painting 'Midland Meadows'.

This painting was presented to the town in 1910 by East on the occasion of his knighthood. First hung in the Library it was finally exhibited in the newly completed gallery in 1913.

It was in urgent need of conservation. This difficult work was carried out by the Hamilton Kerr Institute, a department of the Fitzwilliam Museum in Cambridge. The painting was returned to the

Gallery in late 2015 just in time to be exhibited in *Collection Connections* Exhibition in January/February, where it hung in splendid glory having been returned to its original state as seen in 1913.

The financing for this project came from both Paul Johnson and the Friends -including over £1000 raised at the AE Centenary Dinner in 2013.

The second project concerned a 'discovery' made in Spring 2015 of a wooden sculpture stored in the Museum. The sculpture had not been viewed for many years having been put away after being accidentally damaged.

On investigation it was found to be an important work from the mid 1960's by Brazilian artist Sergio de Camargo and as such warranted extensive conservation. The piece would have been originally purchased for the collection in the late 1960's when de Camargo was still establishing his reputation. Now recognised as an important sculptor of the period, he concentrated on structuring monochrome white surfaces with cylindrical wooden reliefs: the play of light and shadow alternates between order and chaos, fullness and emptiness. He is represented in the Tate Modern.

The Friends were able to fund the conservation through Ward Initiative Funds from two Councillors.

In January the work was returned to the Gallery where it awaits a specialist display case before being put on temporary display. The Friends have earmarked funds for the case.

Projects for 2016 include East's large oil painting 'Lake Bourget' which is currently with the Hamilton Kerr Institute, funding having been put in place.

Other prospective conservation requirements include Kettering artist Frank Jowett's 'Polperro Harbour', restoration estimate £5800. A considerable shortfall in funding currently exists.

(Our Chairman concludes: ...)

So, this year our finances remain in good order, we have re-organised the signatories We include a Gift Aid declaration on membership form ... We have a paid Life Membership – and 4 PLMs so far

Our thanks to David Watson for his 19 years as Treasurer. We are sorry to lose him, but glad to have Phil Steele as Acting Treasurer.

Heritage Map Following our project presentation to KBC last June, we have the Heritage Map in the station, unveiled in the Library by the Mayor in August ... And now in postcard form and on sale in the Museum ... We will be supplying some to the Town Twinning Committee for distribution to visitors to the town.

We have had a busy year of excursions: an outing to Stow and Upper Swell 25 July – where we met the Stow Civic Society and Tim Norris ... to Naseby Battlefield weekend on the 13/14 July with KDAS and the Civic Society for the 370th anniversary ... a Christmas Dinner in Desborough and a party to Wicksteed Trust's Centenary Masked Ball, 29 January!

We look forward, next, to visiting Leicester's Richard III Visitor Centre.

And we will have a stall at the Market Place for KettFest.

We will continue work on the Cemetery Map project, the AE Etchings project, Frank Jowett conservation, and the 'Art In Northamptonshire' catalogue. And our archives material is being rationalised.

Without our hard working Committee team and regular band of volunteers, none of this would be possible. Thanks again to all of them.

Thanks also to Paul Johnson for continuing to put AE (and Kettering) on the map: 'Golden Dawn' is now in Tate Britain for a year ...

Perhaps **In Conclusion** we can say we have fulfilled our Constitutional mandate, and also had a lot of fun.

My thanks to all for your support

John F Wilson

Chair, FKAGAM

March 2016

Visitor numbers to the museum and gallery have increased by 2018 compared to 2014/15. We had a tremendous year at the Northamptonshire Heritage Awards. *Kettering Museum and Art Gallery* was named **Northamptonshire's Heritage Site of the Year**. We also received awards in the following categories:

Best Special Project: Highly commended for the "On the Wagon" Temperance exhibition.

Community Award: Winner for the Kettering Faces of the First World War

Best Exhibition: Highly commended for the Selfies exhibition

'The Art Gallery catalogue', written by Katie Boyce, received a *highly commended* award at the **East Midlands Heritage Awards**.

The Friends were major supporters of the Open Studios (**NOST**) launch event, exhibition and artist trails. Working with Katie Boyce, the Friends were successful in obtaining funding from Northamptonshire County Council to run the *Little Draw* event for children. The Friends also ran a number of fundraising activities during NOST which generated further funds for conservation.

The Friends have provided financial support to enable conservation on pieces from the collection, including re-assembly of the unique Sergio de Camargo sculpture and East's Midland Meadows. We are really grateful to the Friends for their continued fundraising which allows us to commission conservation work.

The museum and gallery team have delivered a staggering array of exhibitions, events and workshops during the past year. Highlights at the museum have included the 1950s exhibition, curated by our new Museum Officer Louise Hannam, and the Henry Gotch Schools which I curated with a huge amount of help from the team! The museum also continues to deliver a wide range of craft activities for children, which are hugely popular with Young Friends.

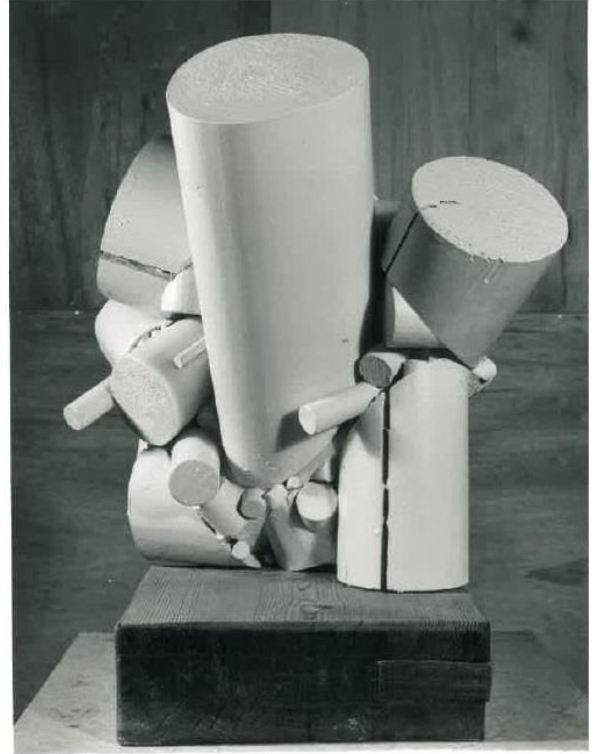
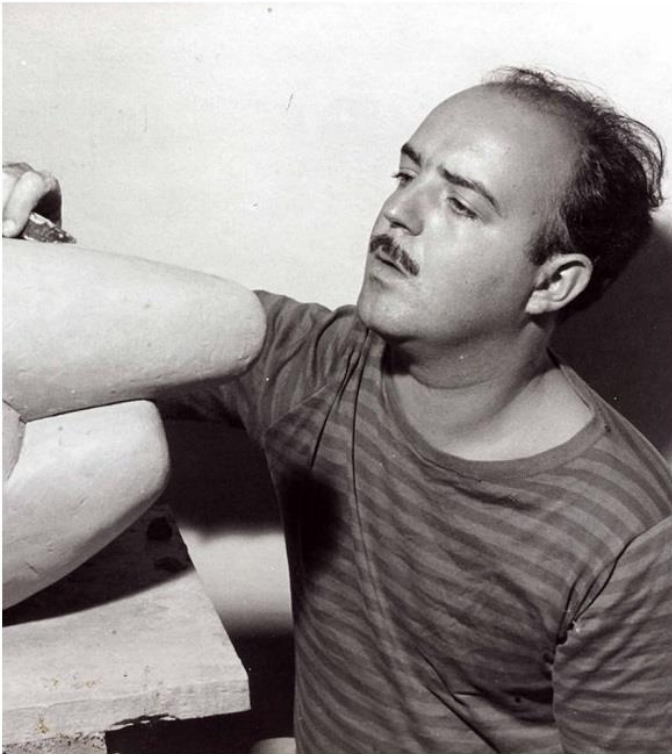
We are grateful for the funding the Friends provide for Young Friends to participate in these activities.

NOST was a huge success. The launch day, exhibition and artist trails involved 10,697 people. The "Collections Connections" exhibition, focusing on the connections between the artists in the art gallery collection, was a creative "tour de force". The gallery walls were painted a fabulous burgundy colour and a "tube style" map linked the connections between the artists in a visually stunning way.

Museum and gallery staff have worked with other council colleagues to deliver family friendly activities in the Manor House Gardens, the Summer Pirates and Princesses event being a particular highlight. The museum hosted a Tudors Halloween Fun Day event which was extremely popular and thank you to Friends and helpers who provided valued assistance during the day, as well as wearing Halloween costumes!

There has been a considerable amount of "behind the scenes" work during the year. Our Arts Council accreditation application was submitted in February: accreditation allows us to apply for funding sources. External funding was secured for an inventory of the museum displays and work is taking place to enhance the gallery's catalogue records. Staff have thoroughly cleaned the boot and shoe display and Arts Council funding has been secured to improve security and environmental monitoring equipment at the gallery.

So we look forward to another exciting year ahead. The I Love Music Kettering opens at the museum on the 18th June and will focus on local music of all types. During the summer months the gallery's main exhibition will focus on comics. During August there will be a super heroes family fun day in the Manor House Gardens. In October the gallery welcomes Martin Sellers, the Open 15 winner and Jamie Boots will also be running a number of workshops.



left: the sculptor Sergio de Carmargo and, right, Kettering's famous piece



George Holland's Wells by the Sea being presented to the Alfred East Art Gallery

(cover illustration... a newly conserved Midland Meadows now back on display in the Alfred East Gallery)