



# FRIENDS & OF KETTERING ART GALLERY MUSEUM

## ANNUAL REPORTS 2016 – 2017



# FRIENDS OF KETTERING ART GALLERY AND MUSEUM

## ANNUAL GENERAL MEETING

Wednesday 19<sup>th</sup> April 7.15 p.m. in the Alfred East Art Gallery

(Chaired by Mr. Richard Makins)

### AGENDA

1. Welcome

2. Apologies

3. Minutes of AGM held on 20<sup>th</sup> April 2016

Matters arising

4. Reports (oral):

Chair

Secretary

Treasurer

Adoption of the Annual Report 2016-2017

Adoption of Accounts 2016

5. Election of officers and committee –

#### Officers

The President (Philip Hollobone)

Secretary (Barbara Lewis)

Treasurer (Phil Steele)

All are willing to stand for re-election

#### Election of Chair person

#### Election of committee members

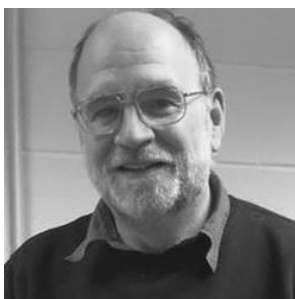
Stephanie Mercer, Ian Luck, Nicola Robinson, David Brown and Maurice Bayes are all willing to stand for re-election.

Nominations for further committee members are invited

6 Any other business

8 Thanks

---



Welcome to the 2017 Annual Report of the Friends of Kettering Art Gallery and Museum, now in our 60<sup>th</sup> year. The format is similar to recent years however Friends should note that the AGM last year changed to reporting year for accounts to a calendar period ending 31<sup>st</sup> December so this year, the first of the new sequence is for a shorter period than normal – April last to December – as we make the change. Otherwise, as usual, reports represent our year, from last AGM to this.

## REPORTS FROM THE CHAIR AND OFFICERS

Friends Chairman John Wilson would like to begin by thanking Richard Makins as acting President for the Annual General Meeting. In addition we appreciate continued support of our President, Phillip Hollobone, and Council nominees (Kelli Watts and Mark Rowley)

The 60th Anniversary of Friends KAGAM has been a successful year, with several progressive moves: we increased the fee for talks to £4, with no loss of numbers; had Christmas Quiz as well as 9 talks and AGM; gave copies of the Heritage Map to the Town Twinning Association for distribution; sorted the archives (thanks, Maurice Bayes) and used them for a Community Corner display. We changed the financial year to 31 December and put accounting system onto a more transparent footing, with Phil Steele as Treasurer. We funded the conservation of the De Camargo sculpture and a display case, and the conservation of AE's 'Lake Bourget' the return of which was supported with a film by Claire Delorme of the Grapevine Society from Aix-les-Bains.

We have continued to work well with Cultural and Recreation Services Manager, Emma Buckler. This year we said goodbye to Louise Hannam as Museum Officer to be replaced by Karen Adhemar. We congratulated Katie Boyce on her wedding – and on her team of 'hangers' for great curatorial work. We helped with children's activities in the

summer, Halloween and special days, and we supplemented the distribution of 'Highlights' (now 'What's On'). We provided prizes for Youth Open 2016 and supported NOST – funding the Studio Prize (with thanks to June Steele) and prizes for the 'Little Draw'. The Friends also ran a raffle to raise funds for Frank Jowett conservation.

Our regular events were supplemented by outings to Naseby Battlefield and to Leicester Richard III museum. We ran publicity stalls at Women's Cycle Race, Kettfest, Kettering by the Sea, Carnival and in the Newlands Centre.

There are individual reports to follow on Talks and Outings, Membership, Finance, Website and Social Media and on Conservation and Acquisitions

We have enjoyed good relations with the Civic Society, the Friends of Kettering Library and with BAfM – regional and national newsletters and conferences

Thanks are due to Paul Johnson for continuing to put AE (and Kettering) on the map

And thanks to Barbara Lewis (Secretary), Ian Luck (art advice), Phil Steele (Website and Social Media), David Brown (talks liaison), Nickkie Robinson and Stephanie Mercer.

All standing again, but I am not standing for re-election as Chair.

**Friends of Museum and Art Gallery accounts for the period 1st April 2016 to 31st December 2016.**

	<b>Details</b>	<b>Community a/c £</b>	<b>Business a/c £</b>	<b>Income £</b>	<b>Expenditure £</b>	<b>Total Balances £</b>
	<b>Opening balances as at 1st April 2016</b>	508.19	14,270.96			<b>14,779.15</b>
	Subscriptions			610.00	808.69	
	Talks			431.23	162.37	
	Special Events - Richard III			373.00	348.00	
	Fundraising			436.78	134.49	
R F	<b>Gallery and Museum development/conservation.</b>					
	NOST and prize			1,379.36	990.00	
1	Map*			0.00	255.00	
2	Conservation*			0.00	4825.00	
				<b>3230.37</b>	<b>7523.55</b>	<b>10485.97</b>
	<b>Closing balances on all accounts as at 31st December 2016.</b>	1809.69	8676.28			<b>10485.97</b>

**Restricted Funds**

**7976.32**

**Total available funds**

**2509.65**

\*Additional Notes: 1. Successful grant application as well as match funding enabled this project, these funds were raised in the previous accounting period.

2. Funded by specific restricted fund donations for both Lake Bourget and the Sergio sculpture, these funds were raised in the previous accounting period

**Friends of Museum and Art Gallery accounts for the period 1st April 2016 to 31st December 2016.**

<b>Restricted Funds</b>								
<b>2016</b>	<b>Gallery development fund.</b>	<b>Museum development fund.</b>	<b>Maurice Bayes fund.</b>	<b>Cadbury fund.</b>	<b>The Jowett fund.</b>	<b>The Johnson fund.</b>	<b>June Steele fund.</b>	
<b>Opening Balance 1st April 2016.</b>	7027.00	0.00	3664.00	1867.00	1036.00	3002.00	0.00	<b>16,596.00</b>
Action: Donations and usage.	909.36 (4392.04)	0.00 (0.00)	0.00 (1825.00)	0.00 (312.00)	0.00 0.00	0.00 (3000.00)	500.00 (500.00)	9119.68
<b>Closing balance 31st December 2016.</b>	3544.32	0.00	1839.00	1555.00	1036.00	2.00	0.00	<b>7976.32</b>

THE FRIENDS OF KETTERING ART GALLERY AND MUSEUM

Charity No: 216048

Trustee Report for the year ended 31st March 2016

This represents the Friends of Kettering Museum and Art Gallery accounts for the period 1st April 2016 to 31st December 2016.

The accounts have been independently verified to confirm that proper records have been kept.

As envisaged in last year's report considerable support has been given to the Museum and Gallery in the period and we have successfully fulfilled a number of objectives from the Restricted Funds.

Trustees are elected annually from amongst the Members taking account of the various skills that are required to run the Charity. They ensure that the accounts are drawn up on an accruals basis consistent with the previous year, and accepted accounting standards. The Trustees have also considered the risks attaching to the Charity and believe that sufficient procedures are in place to mitigate those risks. General funds for running the society remain under pressure, however, and the recruitment of new members will be a key factor going forward to ensure the good financial health of the organization. We need more members and we are keen to welcome new volunteers.

The Trustees are also able to confirm that the Charity complies with section 4 of the Charities Act 2011 regarding providing a public benefit.

Phil Steele, Treasurer

John Wilson, Chair

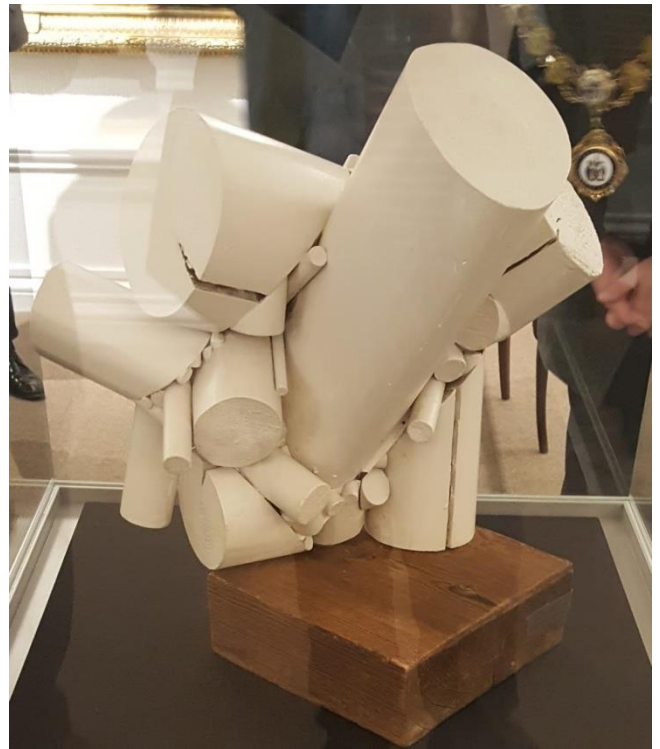
**Please note that this statement of only reflects a part accounting year. This is due to the change of account period which now run to the calendar year, January to December.**



## The Friends of Kettering Art Gallery and Museum's 2016-2017 year in pictures



*(above ... Barb present the twinning association with copies of the Heritage Map)*



*(right ... January saw the unveiling of a long lost sculpture by Brazilian artist Sergio de Camargo)*

*(below, Members of the Friends Committee in the Gallery with Katie and Ryan)*







## REPORTS OF OFFICERS continued ...

### Membership

Overall membership has increased slightly this year however family and youth membership categories have shown a fall in numbers we continue to advertise these, there have been new young members but renewals are reduced significantly. However, **young** Friends attending free sessions at the museum have increased from 125 to 154 this year with the main increase in the summer holidays, October and February half term. We helped at the Halloween day with a bran tub and the boat race and pass the parcel at the paper craft day supplying small prizes to the children.

Membership statistics

	2016/7	2015/6	2014/5	2013/14	2012/13
honorary life	3	3	3	3	2
life	4	4			
single	35	32	33	30	21
couple	17	14	11	13	10
family	0	1	2	6	0
youth	16	21	13	9	0
total units	75	75	62	61	33
children	16	23	19	18	not known
adults	76	65	62	60	43

### Talks

The change of day for the monthly talks does not seem to have affected attendance: Members attending remains at an average 20 per talk visitor numbers have reduced but income, because of the increase to £4, is about 30% up. Over 30 visitors attended the Agatha Christie talk in October and the audience nearly reached the maximum allowed in the large gallery. Refreshments have proved very successful raising nearly over £80

We had a varied range of talks, a Shakespeare quiz at Christmas and a trip to see the Richard 111 exhibition in Leicester.

### Open competition

Again we sponsored the prizes for the youth competition, gave certificates to all entrants and helped with advertising and judging. Again the entries were displayed in the long gallery and several sales resulted.

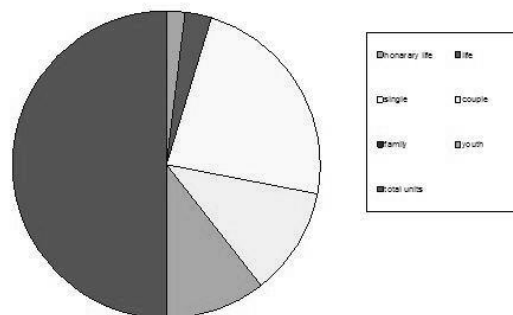
The 13 entries in the Age Group 8 – 11 years left the judges speechless at times and it made it difficult to choose any winners, as all were worthy of praise and showed considerable promise and skill unexpected for their age. The standard and variety in the 16 entries in the 12 -15 age group was amazing and elicited gasps of admiration and surprise from the judges. We were again disappointed by the lack of entries in the 16 -18 age group but the skill, commitment and talent of the entries was clear to see. We would ask that members encourage any talented children they know to enter these competitions as they are the future of the gallery.

### Fund raising

We organised our own stall when the women's cycle race came to Kettering, distributing Highlights and information throughout the town. This year we also held a treasure

hunt based on a lost cyclist to raise funds. This was very successful so we repeated the treasure hunt at NOST with a 'win every time tombola' for the children. Members worked tirelessly to help with Little Draw and Big Paint and on our promotional stall until the rain came! But we raised some money at these events to support the children's activities .thanks to the efforts of our members

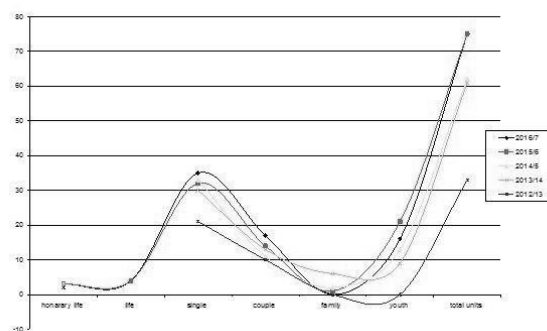
We supported Kettfest with a stall in the Newlands centre where children were able to draw their comic heroes and take to the gallery to be displayed and at Kettering carnival on a very windy day we distributed Highlights as well as carrying out a survey to see if people knew about the museum and gallery ! .



We continued to offer items for sale and our fund raising included sales of a range of prints and the map in a range of sizes, the Geoff Hale DVD's are limited. We attended the Christmas charity fair at All Saints for the first time this year and the library fair at both we had a bran tub for children which was very successful. A 'guess the Christmas cake baking day' raised £48 and we are grateful for the donation of the cake and other sale items which meant we raised over £300

We continued to advertise in local magazines and newspapers as well as helping to distribute the Highlights magazine, now the 'What's On' as widely as possible and where possible display posters for talks at supermarkets and other venues in and around the town. Help is always appreciated in any advertising of events and the Friends' talks.

We hope to continue the successful fundraising with the support of our members and friends as well as making applications for grants for specific projects.



\*\*\*\*\*



***Reviewing 6 years, retiring Chair, John Wilson says ...***

I have enjoyed my 6 years as Chair and it has been a privilege for a non-specialist to be involved in art gallery and museum work. The years have seen:

*An increase in monthly talks from 6 to 9; the creation of family membership and youth membership categories; the creation of Life Membership category; more support for children's activities in museum; support for 'Highlights' distribution; posters for every talk and publicity in local media; the celebration of Centenary of the Gallery and of death of Alfred East; Farewell to Val Hitchman, Claire Brown, Claire Bowyer, and welcoming of Emma Buckler, Katie Boyce and Ellie Baumber ...*

*Good relations with KBC via Council nominees on the Committee; the creation of the Heritage Map and its placing in the station, library, Newlands, the bus station and Council Offices; merchandise; regular stalls at Newlands Centre etc.; regular outings including Newton, Stow and Leicester.*

The list goes on ... (cont, on p.10 )

\*\*\*\*\*

**Talks Report 2016-2017 (David Brown)**

This year has been another successful one for the quality of the talks, and the attendance at the Wednesday evening meetings. The usual tea and coffee was supplemented by the offer of a glass of wine, for a small donation to the funds, and has helped to swell the coffers!

Following the AGM in April, the Chairman, John Wilson gave his customary address, which this year was about the World Heritage sites in Vietnam. May saw Bill Branford present an erudite account of the Nettleship family. As well as Jack, a local artist of whom the Gallery has a number of canvasses, the

rest of the family showed immense talents and scholarship. Patricia Woods, senior guide at Rockingham Castle spoke to us in June about some of the personalities associated with the castle: kings, queens, dukes and duchesses and of course Charles Dickens. In July, Phil Steele gave an excellent presentation on Richard III to elaborate on our visit to the Leicester Visitor Centre.

After the customary summer break we started the new program in September, with a fascinating talk by Caroline Corbeau-Parsons, assistant curator at the Tate Gallery, on John Singer Sargent's painting 'Carnation, Lily, Lily, Rose'. It hangs in the Tate, just around the corner from the recently re-hung Alfred East picture.

The Agatha Christie talk, in conjunction with the Museum exhibition, proved extremely popular and the exhibition was also well received. Thanks to Gale Goddard for the organization. Local antiquarian and pottery expert, Steve Sharpe returned in November to tell us all about Roman Samian ware, a style of pottery which is found in some quantities locally. The normally vacant slot in December was filled this year, on the 400<sup>th</sup> anniversary of Shakespeare's death, with a light-hearted quiz on The Bard's works, which was well received.

After Christmas we welcomed Andrew Eden to speak. Andrew was a senior lecturer in the history of art at Tresham College before his retirement and spoke to us about 'How We See Pictures', the interaction between our physiology and works of art. In February, John Cartwright, Roman historian, picked up the story that he left off last year, and elaborated on the 'Romans in our Area', with reference to Leicester in particular. The talk planned for March, Alan Toseland on the subject of the Warkton Church Monuments, had to be cancelled due to ill health. David Brown stepped in at short notice, and his talk,

entitled Double Dutch told the story of the link between Dutch trade and exploration overseas and the blossoming of art in the Netherlands during the Golden Age.

.....

Ian Luck reports on our acquisitions help:

Included in the Christies, South Kensington, auction for 23 March 2016 of Victorian, Pre-Raphaelite and British Impressionist Art were several works by Sir Alfred East.

The painting 'Sayanara-dans-le-Japon' interested the Gallery. An unusual and important large work, lost for a number of years, painted after East's return from Japan.

Katie Boyce was very successful in securing funding from The V&A Purchase Fund, the Art Fund and the Friends to go to the auction with a maximum hammer price of £15,000. Unfortunately for us, the piece was very popular and Christies hung it very favorably in the room. The sale ended at a hammer price of £31,000, way beyond what anyone estimated it would go for.

Katie stated afterwards 'even though all the images make the piece look very dark, it was amazing and would have been a great asset to the collection at the Gallery. It was a great experience.'

In November 2016, The Friends advised Katie of a Thomas Cooper Gotch watercolour that was to be auctioned at Batemans in Stamford. An attractive small painting described as 'a study of a girl in a white dress and shoes dancing, with a boy in costume holding a fencing rapier'. Estimated at £200-£300, the Friends agreed to fund the purchase, David Brown attended the auction and was surprised to see the painting achieve a hammer price of £1200, another lost opportunity for the Gallery!

Success however on 28th March 2017 at Gildings in Market Harborough when the Gallery managed a winning bid of £5400, the hammer price for East's 'The Overgrown Garden'. Another painting whose whereabouts had become unknown, this work from 1883 was completed on his return from the artists' colony in Barbizon, France and is considered as one of his best from this period. The V&A

Purchase Fund, the Art Fund, The Friends and KDAS made the purchase possible.

.....

Phil Steele has had a busy year managing our website and Social Media pages and urges you all to join us on Facebook ('Kettering Museum and Gallery') and at Kettering Art News (where all of our talks and events are posted ... join this by email and you will automatically receive updates) ...



We eagerly await a revamped website in 2017

\*\*\*\*\*

John Wilson completes his summary of 6 years of development and innovation:

- Attendance by Mayors at events.
- Election of Philip Hollobone as President.
- Good relations with Civic Society and Friends of the Library
- Help to Town Twinning association.
- Relations with Graoepvine Society of Aix-les-Bains
- Paul Johnson's support, leading to Toni Huberman, Horace Liberty, etc.
- Benedict & Elizabeth Cadbury support with funding
- Conservation of Midland Meadows and Lake Bourget and De Camargo sculpture
- Support for Youth Open and NOST
- Annual Community Corner display

# **Museum and Gallery Report**

## **April 2016-March 2017**

Visitor numbers to the Museum and Gallery have increased compared to 2015/16. Over the last 5 years we have had a 23% increase in visitor figures. This amazing achievement is testament to our strong partnership with the Friends and our fantastic Museum and Gallery team.

We had a tremendous year at the Northamptonshire Heritage Awards where Kettering Museum and Art Gallery was named the People's Choice Winner. We also received the best exhibition award for the Collection Connections exhibition that has also been shortlisted for a national Museum & Heritage Award; we find out the outcome in May.

The Friends were major supporters of the Open Studios (NOST) launch event, exhibition and artist trails. The Friends also ran a number of fundraising activities during NOST, which generated further funds for conservation work on the Gallery permanent collection.

This year has seen the culmination of two conservation projects that the Friends have financially supported. In January the Sergio de Camargo sculpture was formally unveiled by the Mayor of Kettering, Councillor Edwards. The Friends also funded extensive conservation treatment, and a new high-security display case for the piece.

In March, Alfred East's Lake Bourget was displayed as part of the exhibition Around the World in 18 frames, curated by our Museum and Gallery Apprentice, Jodie Neely. The Friends provided funding for much-needed conservation work enabling us to put the painting on public display.

This year the Museum and Gallery team have delivered a staggering array of exhibitions, events and workshops. We are extremely grateful to members of the Friends who volunteer at our family fun days. This help is essential to the smooth running and delivery of the events.

Exhibition highlights at the Museum have included, I Love Music Kettering, Agatha Christie and Play and Display. The Museum continues to deliver a wide range of craft activities for children. We appreciate the funding the Friends continue to provide which enable the Young Friends to participate in these activities.

The Gallery has been the centre of many fabulous exhibitions and events. In the Summer, Katie Boyce curated the visually stunning Comics exhibition, which featured an amazing Comic style mural in the Large Gallery. This exhibition attracted new audiences and explored a unique art form.

Museum and Gallery staff have worked with other council colleagues to deliver family friendly activities in the Manor House Gardens; the Summer Super Heroes event was a particular highlight. The Museum hosted a Lego event which attracted over 700 visitors in just 4 hours!

There has been a considerable amount of "behind the scenes" work taking place during the year. In February Arts Council England re-awarded our Accreditation status. This demonstrates to funders that we are meeting professional management standards.

The exhibition facilities at the Gallery have now been upgraded with funding from Museum Development East Midlands, and we are now approaching the national collections for high profile works to display. External funding has also been secured to refurbish two display areas in the Museum. This includes the front exhibition space area and the 1<sup>st</sup> floor temporary display area.

Emma Buckler

**Cultural and Heritage Services Manager**



***(Lake Bourget returns to the Art Gallery following extensive conservation funded through the Friends)***



***(Alfred East's An Overgrown Garden, 1883, newly purchased for the Gallery with assistance from the Friends)***